



MONTHLY BULLETIN

JUNE 2020

September 18, 2020
Issue no. 391



CENTRALE BANK VAN ARUBA

Contents

- I. Main economic indicators 1

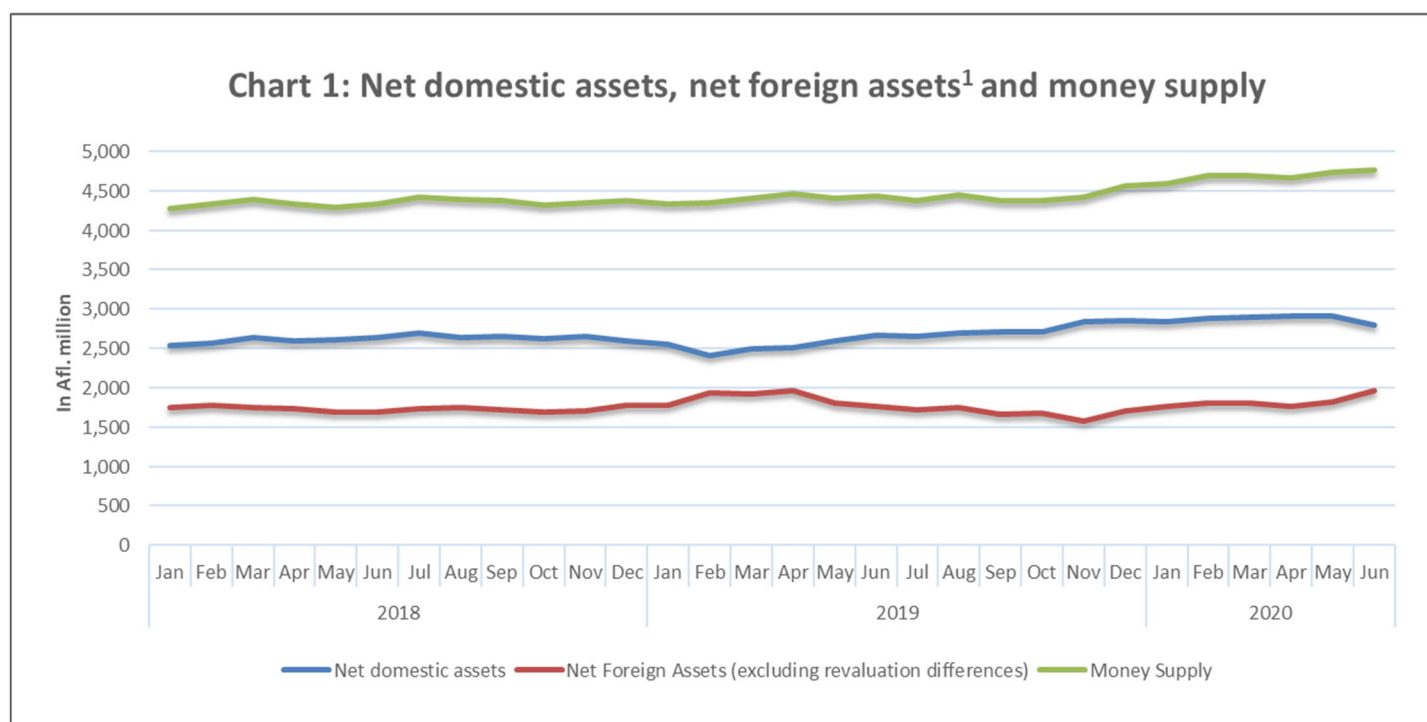
Statistical Annex

- 1. Monetary survey 8
- 2. Components of broad money 9
- 3. Causes of changes in broad money 10
- 4. Foreign assets 11
- 5. Consolidated balance sheet of the money-creating institutions 12
- 6. Centrale Bank van Aruba: Summary account 14
- 7. Commercial banks' consolidated summary account 15
- 8. Government Revenue 16
- 9. Government's position with the monetary system 17
- 10. Tourism 18
- 11. Growth in stay-over tourism 19
- 12. Consumer price index 20

I. Main economic indicators

Monetary developments

In June 2020, money supply increased by Afl. 25.9 million to Afl. 4,761.5 million, compared to May 2020, resulting from an expansion in the net foreign¹ assets (+Afl. 138.3 million) and a decrease in the net domestic assets (-Afl. 112.4 million) (Chart 1).



Source: Centrale Bank van Aruba

¹ Excluding revaluation differences of gold and foreign exchange holdings.

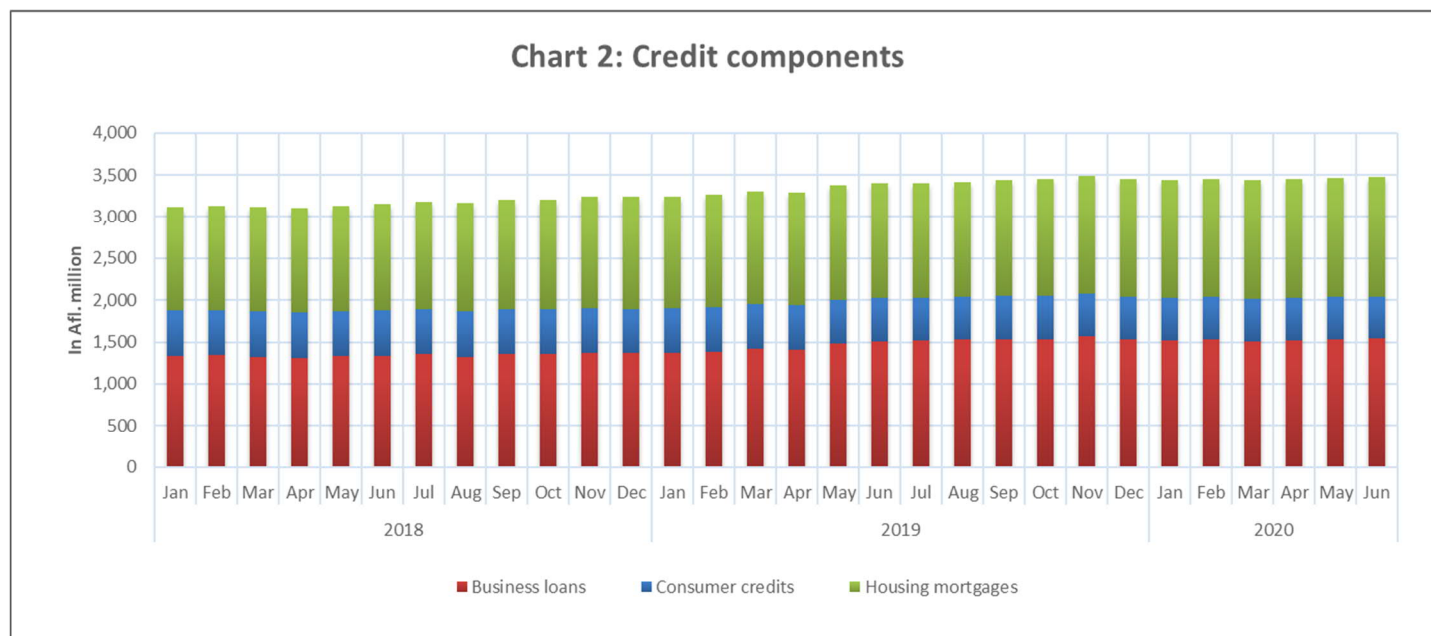
Money, as a component of broad money, grew by Afl. 21.9 million to Afl. 2,746.2 million, due to increases in both demand deposits (+Afl. 15.1 million) and in money in circulation (+Afl. 6.7 million). The rise in demand deposits resulted from an expansion in the deposits denominated in Aruban florin (+Afl. 46.0 million) and a decline in deposits denominated in foreign currency (-Afl. 30.9 million). Quasi-money rose by Afl. 4.1 million to Afl. 2,015.2 million, due to an increase in time deposits denominated in Aruban florin (+Afl. 15.1 million) and a decrease in savings deposits denominated in Aruban florin (-Afl. 10.6 million).

In June 2020, net foreign assets of the banking sector expanded due to net purchases of foreign exchange of Afl. 313.4 million from the public, mostly related to other investment and net transfer from foreign accounts. These were largely offset by net sales of foreign exchange of Afl. 175.1 million to the public, mainly associated with payments for goods imports, portfolio investment, and other services (Table 1).

Table 1. Change in Net Foreign Assets (NFA) June 2020 (in Afl. million)	
Net purchases of foreign exchange	313.4
Other investment	283.8
Net transfers from foreign accounts	19.6
Tourism services	5.9
Government services	1.8
Direct investment	0.8
Transportation services	0.7
Items not yet classified	0.6
Capital account transactions	0.1
Net sales of foreign exchange	-175.1
Goods	-108.7
Other services	-20.8
Portfolio investment	-23.0
Items not yet classified	-9.5
Primary Income	-6.9
Secondary Income	-3.2
Financial derivatives	-3.1
NET CHANGE IN NFA (minus (-) denotes a decrease)	138.3

Source: Centrale Bank van Aruba

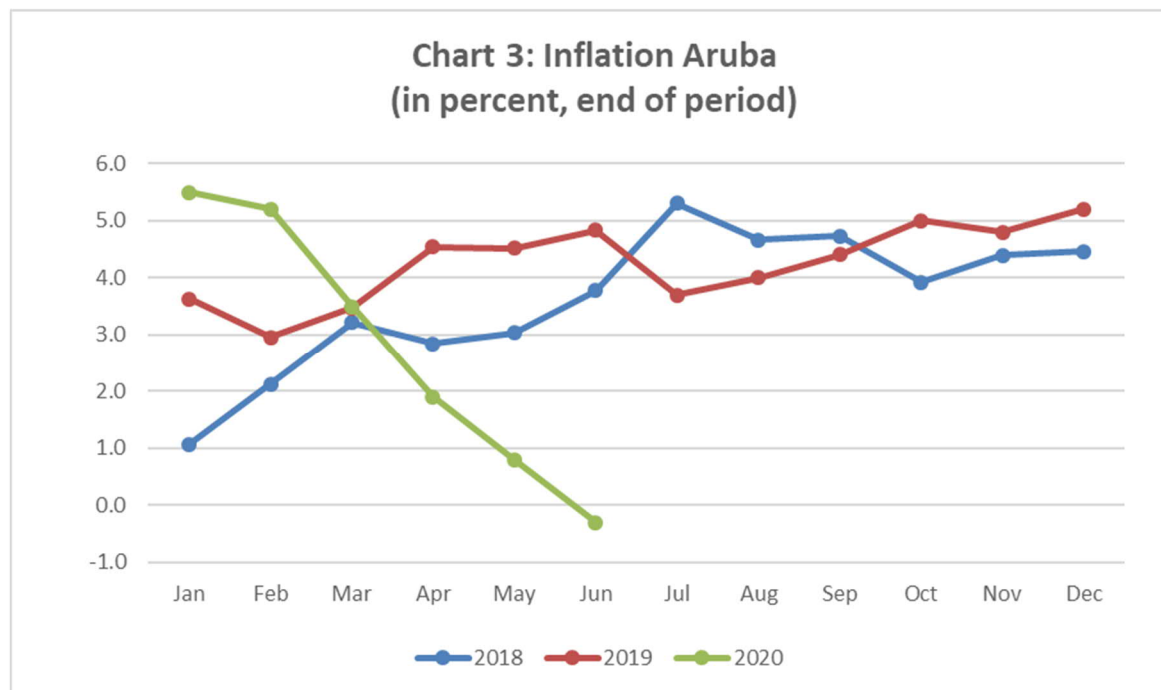
The decline in the domestic component of money supply was due to decreases in both domestic credit (-Afl. 101.0 million) and in the non-credit related balance sheet items (-Afl. 11.4 million). The decline in domestic credit was attributed to lower net claims of the banking sector on the public sector (-Afl. 117.8 million) and an increase in claims of the banking sector on the private sector (+Afl. 16.8 million). The lower net claims of the banking sector on the public sector was caused by a decrease in gross claims (-Afl. 66.8 million) and an increase in government deposits (+Afl. 51.0 million). The growth in the claims of the banking sector on the private sector (see Chart 2: Credit components) was the result of a rise in housing mortgages (+Afl. 8.3 million), consumer credit (+Afl. 6.9 million), and loans to enterprises (+Afl. 1.6 million).



Source: Centrale Bank van Aruba

Inflation

The consumer price index (CPI) for June 2020 noted a 0.3 percent decrease year-over-year (YOY) compared to a 0.8 percent increase (YOY) for May 2020 (Chart 3).



Source: Centrale Bureau of Statistics

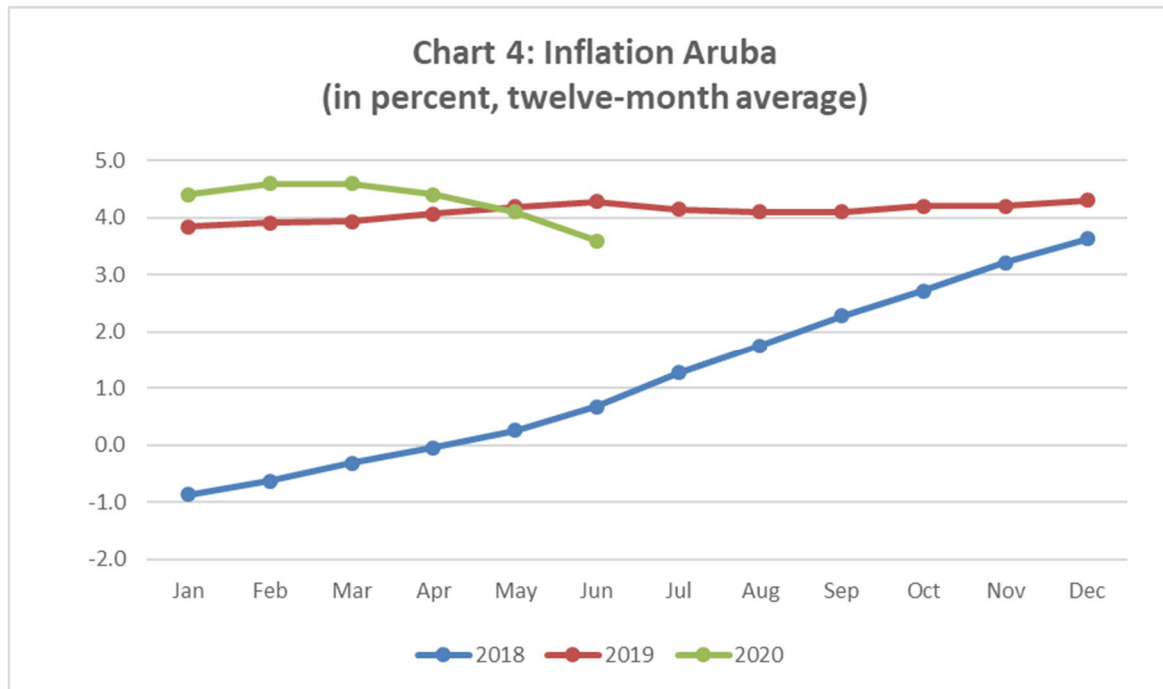
The main contributors to this decrease were the “Transport”, “Housing”, and “Household Operation” components. In addition, the “Food and Non-Alcoholic Beverages” component also noted a decrease, while the “Recreation and Culture”, “Clothing and Footwear”, “Health”, and “Restaurants and Hotels” components noted increases. The other components remained unchanged. Furthermore, by excluding the effect of food and energy², the core CPI also grew by 1.9 percent (YOY) (Table 2).

Table 2: COMPONENTS OF INFLATION				
Inflation components	End-month inflation		12-month average inflation	
	Jun-19	Jun-20	Jun-19	Jun-20
Food And Non-Alcoholic Beverages	2.4	-0.2	1.8	1.5
Beverages And Tobacco Products	0.2	0.0	0.1	0.1
Clothing And Footwear	0.1	0.1	0.1	0.1
Housing	0.4	-0.6	0.2	0.0
Household Operation	0.0	-0.4	0.1	0.1
Health	0.1	0.1	0.2	0.0
Transport	0.2	-0.9	0.7	-0.1
Communication	0.6	0.0	0.5	0.2
Recreation And Culture	0.0	1.6	0.2	1.3
Education	0.0	0.0	0.0	0.0
Restaurants And Hotels	0.3	0.1	0.2	0.2
Miscellaneous Goods And Services	0.4	0.0	0.2	0.2
Total	4.8	-0.3	4.3	3.6
Total Excluding Energy & Food	2.6	1.9	2.1	2.9

Source: Centrale Bureau of Statistics

² Partly affects the housing and transport components.

The 12-month average inflation rate was 3.6 percent in June 2020, compared to 4.1 percent in May 2020 (Chart 4).



Source: Centrale Bureau of Statistics

Government

Total government revenue amounted to Afl. 72.6 million in June 2020, Afl. 43.1 million less than the same month of the previous year.

The decline in government revenue resulted from decreases in tax revenue (-Afl. 42.8 million) and in non-tax revenue (-Afl. 0.4 million).

The reduction in tax revenue was mainly driven by decreases in income from turnover tax (-Afl. 9.0 million), profit tax (-Afl. 7.3 million), import duties (-Afl. 6.8 million), wage tax (-Afl. 4.9 million), land tax (-Afl. 3.9 million), and foreign exchange tax (-Afl. 3.8 million).

Tourism

Please note that due to the closure of borders because of the COVID-19 pandemic, no tourists were welcomed during the month under review.

TABLE 1: MONETARY SURVEY*

In Afl. million

End of period	2016	2017	2018	2019	2019			2020		
					April	May	June	April	May	June
I. Net domestic assets	2,390.2	2,555.1	2,601.4	2,856.9	2,503.0	2,595.0	2,663.1	2,908.1	2,906.2	2,793.8
A) Domestic credit	3,306.6	3,533.2	3,679.7	3,964.1	3,633.4	3,721.4	3,794.0	4,037.6	4,041.5	3,940.5
1) Net claims on public sector	287.0	400.0	434.1	502.6	326.7	336.5	378.6	575.6	565.3	447.4
a) Gross claims**	393.6	513.6	559.8	626.5	450.5	535.6	535.7	659.8	659.9	593.1
b) Government's deposits	-57.8	-102.9	-125.7	-123.9	-123.8	-199.1	-157.1	-84.2	-94.6	-145.6
c) Development funds	-48.8	-10.7	0.0	0.0	0.0	0.0	0.0	0.0	0.0	0.0
2) Claims on private sector	3,019.6	3,133.2	3,245.6	3,461.4	3,306.7	3,384.9	3,415.4	3,461.9	3,476.2	3,493.0
a) Enterprises	1,285.1	1,333.9	1,371.6	1,533.8	1,409.7	1,483.9	1,510.1	1,520.7	1,537.0	1,538.6
b) Individuals	1,724.2	1,788.6	1,862.5	1,915.0	1,884.9	1,888.9	1,893.2	1,928.5	1,926.5	1,941.7
1) Consumer credit	558.4	550.7	524.3	505.9	525.3	522.6	521.6	506.1	498.2	505.1
2) Housing mortgages	1,165.8	1,237.9	1,338.1	1,409.1	1,359.6	1,366.2	1,371.6	1,422.4	1,428.3	1,436.6
c) Other	10.4	10.6	11.5	12.6	12.1	12.1	12.1	12.8	12.8	12.8
B) Other items, net	-916.5	-978.1	-1,078.3	-1,107.2	-1,130.4	-1,126.4	-1,130.9	-1,129.5	-1,135.3	-1,146.7
II. Net foreign assets	1,777.5	1,684.8	1,776.2	1,712.5	1,960.0	1,807.8	1,772.2	1,764.0	1,829.4	1,967.7
A) Centrale Bank van Aruba***	1,558.3	1,509.8	1,636.3	1,569.2	1,778.5	1,673.9	1,666.1	1,632.1	1,700.4	1,885.1
B) Commercial banks	219.2	175.0	139.9	143.3	181.5	133.8	106.0	132.0	129.0	82.6
III. Broad money	4,167.6	4,239.9	4,377.6	4,569.4	4,463.0	4,402.8	4,435.3	4,672.1	4,735.5	4,761.5
A) Money	2,251.5	2,421.6	2,433.3	2,574.8	2,668.9	2,512.3	2,530.8	2,656.3	2,724.4	2,746.2
B) Quasi-money	1,916.1	1,818.3	1,944.3	1,994.6	1,794.0	1,890.5	1,904.5	2,015.8	2,011.2	2,015.2

* The monetary survey consolidates the accounts of the Centrale Bank van Aruba, the commercial banks and the Government related only to the issuance of components of the money supply, i.e., coins and treasury bills. This survey shows the financial relationship between the monetary sector, whose liabilities include the money supply, and other sectors of the economy.

** Gross claims include loans granted as well as government bonds in the hands of the monetary sectors and claims resulting from the issuance of treasury bills, cash certificates, and coins.

*** Revaluation differences of gold and official foreign exchange holdings are excluded in order to approximate the net import of foreign funds by the nonmonetary sectors.

TABLE 2: COMPONENTS OF BROAD MONEY

In Afl. million

End of period	Currency			Demand deposits			Money	Other deposits					Treasury bills and cash loan certificates	Quasi-money	Broad money	
	Issued	At banks	Outside banks	Afl.	Foreign currency	Total		Savings		Time		Total				
								Afl.	Foreign currency	Afl.	Foreign currency					
(1)	(2)	(3= 1-2)	(4)	(5)	(6= 4+5)	(7= 3+6)	(8)	(9)	(10)	(11)	(12= 8+9+10+11)	(13)	(14= 12+13)	(15= 7+14)		
2016	305.8	59.5	246.3	1,656.6	348.6	2,005.2	2,251.5	976.4	5.5	930.5	3.7	1,916.1	0.0	1,916.1	4,167.6	
2017	332.9	66.7	266.3	1,793.4	362.0	2,155.4	2,421.6	995.3	4.4	813.1	5.5	1,818.3	0.0	1,818.3	4,239.9	
2018	336.1	75.2	260.9	1,797.3	375.1	2,172.4	2,433.3	1,036.2	6.0	898.0	4.1	1,944.3	0.0	1,944.3	4,377.6	
2019	298.6	69.7	228.9	1,951.4	394.6	2,346.0	2,574.8	1,042.8	5.4	934.0	12.3	1,994.6	0.0	1,994.6	4,569.4	
2019	January	307.5	53.9	253.6	1,802.4	348.3	2,150.7	2,404.3	1,034.1	4.8	893.1	4.1	1,936.1	0.0	1,936.1	4,340.4
	February	307.1	50.2	256.8	1,926.9	398.0	2,324.9	2,581.7	1,034.1	5.8	722.3	4.1	1,766.4	0.0	1,766.4	4,348.2
	March	311.2	51.5	259.6	1,992.6	414.4	2,407.0	2,666.6	1,022.7	3.7	710.1	4.1	1,740.6	0.0	1,740.6	4,407.3
	April	315.4	54.4	261.1	2,023.6	384.3	2,407.9	2,668.9	1,040.7	5.6	743.6	4.1	1,794.0	0.0	1,794.0	4,463.0
	May	367.0	110.3	256.7	1,917.2	338.4	2,255.6	2,512.3	1,050.4	4.1	831.8	4.1	1,890.5	0.0	1,890.5	4,402.8
	June	296.1	65.6	230.5	1,981.5	318.8	2,300.3	2,530.8	1,052.6	4.0	843.7	4.2	1,904.5	0.0	1,904.5	4,435.3
	July	280.2	65.9	214.3	1,920.2	338.7	2,258.9	2,473.2	1,041.8	4.7	855.8	4.2	1,906.6	0.0	1,906.6	4,379.8
	August	266.8	51.7	215.1	1,907.5	359.0	2,266.4	2,481.5	1,039.5	5.5	915.8	4.2	1,965.1	0.0	1,965.1	4,446.6
	September	266.3	48.6	217.7	1,897.8	329.2	2,226.9	2,444.7	1,035.8	5.4	896.5	4.3	1,941.9	0.0	1,941.9	4,386.6
	October	266.4	51.2	215.2	1,870.0	349.5	2,219.5	2,434.7	1,029.8	5.5	907.2	8.8	1,951.3	0.0	1,951.3	4,386.1
	November	277.6	52.0	225.7	1,927.8	338.2	2,266.0	2,491.7	1,037.4	5.7	878.0	8.8	1,929.9	0.0	1,929.9	4,421.5
	December	298.6	69.7	228.9	1,951.4	394.6	2,346.0	2,574.8	1,042.8	5.4	934.0	12.3	1,994.6	0.0	1,994.6	4,569.4
2020	January	276.1	48.7	227.4	1,972.9	375.1	2,348.1	2,575.5	1,047.8	3.2	958.3	12.3	2,021.7	0.0	2,021.7	4,597.2
	February	278.4	49.6	228.7	2,042.5	382.6	2,425.0	2,653.8	1,067.0	5.6	950.3	13.0	2,035.9	0.0	2,035.9	4,689.7
	March	290.9	47.7	243.1	2,044.4	383.4	2,427.8	2,670.9	1,068.7	4.4	943.6	13.0	2,029.7	0.0	2,029.7	4,700.6
	April	298.9	44.6	254.3	2,068.2	333.8	2,402.0	2,656.3	1,097.0	5.2	900.6	13.0	2,015.8	0.0	2,015.8	4,672.1
	May	312.0	48.0	264.0	2,116.3	344.1	2,460.4	2,724.4	1,100.1	4.6	892.8	13.0	2,010.5	0.6	2,011.2	4,735.5
	June	317.7	47.0	270.7	2,162.3	313.2	2,475.5	2,746.2	1,089.5	4.2	907.9	13.0	2,014.6	0.6	2,015.2	4,761.5

TABLE 3: CAUSES OF CHANGES IN BROAD MONEY

In Afl. million

During period	2016	2017	2018	2019	2019			2020		
					April	May	June	April	May	June
I. Net domestic money creation	100.9	164.9	46.4	255.4	12.2	92.0	68.1	20.5	-1.9	-112.4
A) Domestic credit	142.9	226.5	146.5	284.4	0.8	88.0	72.6	27.0	3.9	-101.0
1) Net claims on public sector	91.4	113.0	34.1	68.6	8.0	9.8	42.1	14.9	-10.4	-117.8
a) Recourse to monetary system	24.4	120.0	46.2	66.7	-0.1	85.1	0.1	25.0	0.0	-66.8
b) Drawing down of bank balances	66.9	-7.0	-12.1	1.8	8.1	-75.3	42.0	-10.1	-10.4	-51.0
1) Government's deposits	36.3	-45.0	-22.8	1.8	8.1	-75.3	42.0	-10.1	-10.4	-51.0
2) Development funds	30.6	38.1	10.7	0.0	0.0	0.0	0.0	0.0	0.0	0.0
2) Claims on private sector	51.6	113.5	112.4	215.8	-7.1	78.2	30.6	12.1	14.3	16.8
a) Enterprises	14.5	48.8	37.7	162.2	-8.9	74.2	26.2	9.3	16.4	1.6
b) Individuals	36.5	64.4	73.8	52.5	1.2	3.9	4.4	2.9	-2.1	15.2
1) Consumer credit	-13.5	-7.7	-26.4	-18.5	-3.9	-2.7	-1.0	-1.3	-7.9	6.9
2) Housing mortgages	49.9	72.1	100.2	71.0	5.2	6.6	5.4	4.2	5.9	8.3
c) Other	0.6	0.3	0.9	1.1	0.5	0.0	0.0	0.0	0.0	0.0
B) Other domestic factors	-42.0	-61.6	-100.2	-28.9	11.4	4.0	-4.5	-6.6	-5.8	-11.4
II. Inflow of foreign funds*	261.8	-92.7	91.4	-63.7	43.5	-152.2	-35.6	-49.0	65.3	138.3
III. Broad money	362.7	72.3	137.8	191.8	55.7	-60.2	32.5	-28.5	63.5	25.9
1) Money	191.0	170.1	11.7	141.5	2.3	-156.6	18.5	-14.7	68.1	21.9
2) Quasi-money	171.7	-97.8	126.0	50.3	53.4	96.4	14.0	-13.9	-4.6	4.1

* Revaluation differences of gold and official foreign exchange holdings are excluded in order to approximate the net import of foreign funds by the nonmonetary sectors.

TABLE 4: FOREIGN ASSETS

In Afl. million

		Centrale Bank van Aruba				Commercial banks			Total	Revalua- tion diffe- rences*	Total excl.(9)
		Gold	Other assets	Liabi- lities	Net	Assets	Liabi- lities	Net			
End of period		(1)	(2)	(3)	(4= 1+2-3)	(5)	(6)	(7= 5-6)	(8= 4+7)	(9)	(10= 8-9)
2016		230.9	1,446.3	3.9	1,673.2	712.1	492.9	219.2	1,892.4	114.9	1,777.5
2017		258.3	1,391.7	0.7	1,649.2	585.9	410.9	175.0	1,824.2	139.4	1,684.8
2018		255.3	1,525.2	2.6	1,778.0	524.9	385.0	139.9	1,917.9	141.7	1,776.2
2019		303.4	1,485.7	4.3	1,784.8	604.4	461.1	143.3	1,928.0	215.5	1,712.5
2019	January	255.3	1,544.7	16.1	1,783.9	500.6	352.0	148.5	1,932.5	145.8	1,786.7
	February	255.3	1,656.8	0.8	1,911.3	548.9	374.6	174.3	2,085.7	147.6	1,938.1
	March	258.1	1,648.5	0.7	1,905.9	503.0	336.3	166.7	2,072.6	156.1	1,916.5
	April	258.1	1,677.4	0.4	1,935.1	513.1	331.6	181.5	2,116.5	156.5	1,960.0
	May	258.1	1,587.1	7.1	1,838.0	496.0	362.2	133.8	1,971.8	164.0	1,807.8
	June	280.7	1,579.3	0.3	1,859.7	513.5	407.5	106.0	1,965.7	193.6	1,772.2
	July	280.7	1,554.1	1.0	1,833.8	459.3	373.7	85.6	1,919.4	189.2	1,730.2
	August	280.7	1,577.1	0.5	1,857.3	455.3	358.8	96.6	1,953.8	197.9	1,755.9
	September	295.9	1,528.0	1.7	1,822.2	446.5	387.0	59.5	1,881.7	209.5	1,672.2
	October	295.9	1,494.9	0.1	1,790.7	480.7	386.8	93.9	1,884.6	210.9	1,673.7
	November	295.9	1,407.4	0.3	1,703.1	486.8	397.1	89.7	1,792.7	208.3	1,584.5
	December	303.4	1,485.7	4.3	1,784.8	604.4	461.1	143.3	1,928.0	215.5	1,712.5
2020	January	303.4	1,549.5	0.1	1,852.8	529.6	400.4	129.2	1,982.0	220.4	1,761.5
	February	303.4	1,560.2	0.6	1,863.1	574.9	407.8	167.1	2,030.2	225.3	1,805.0
	March	320.5	1,551.0	0.2	1,871.3	565.2	391.3	173.9	2,045.2	232.2	1,813.0
	April	320.5	1,555.7	0.1	1,876.2	512.3	380.3	132.0	2,008.2	244.1	1,764.0
	May	320.5	1,630.0	0.1	1,950.5	491.1	362.1	129.0	2,079.5	250.1	1,829.4
	June	352.2	1,833.8	16.5	2,169.6	445.7	363.2	82.6	2,252.1	284.4	1,967.7

* Of gold and official foreign exchange holdings, in accordance with the Central Bank Ordinance as revised in December 1989.

TABLE 5a: CONSOLIDATED BALANCE SHEET OF THE MONEY-CREATING INSTITUTIONS

In Afl. million

End of period	2016	2017	2018	2019	2019			2020		
					April	May	June	April	May	June
ASSETS										
1. Claims on money-creating institutions	1,280.0	1,266.0	1,432.4	1,406.9	1,436.3	1,500.1	1,511.5	1,433.0	1,462.7	1,617.4
a) Monetary authorities	1,232.2	1,220.2	1,390.2	1,364.7	1,394.1	1,457.9	1,469.3	1,390.8	1,444.2	1,598.8
b) Commercial banks	47.8	45.8	42.2	42.2	42.2	42.2	42.2	42.2	18.5	18.6
2. Claims on the public sector	393.6	513.6	559.8	626.5	450.5	535.6	535.7	659.8	659.9	593.1
a) Short-term	140.9	115.9	173.2	206.7	48.7	48.8	115.8	240.0	240.1	173.2
b) Long-term	252.7	397.7	386.6	419.8	401.8	486.8	419.8	419.8	419.8	419.8
3. Claims on the private sector	3,019.6	3,133.2	3,245.6	3,461.4	3,306.7	3,384.9	3,415.4	3,461.9	3,476.2	3,493.0
a) Enterprises	1,285.1	1,333.9	1,371.6	1,533.8	1,409.7	1,483.9	1,510.1	1,520.7	1,537.0	1,538.6
b) Individuals	1,724.2	1,788.6	1,862.5	1,915.0	1,884.9	1,888.9	1,893.2	1,928.5	1,926.5	1,941.7
1) Consumer credit	558.4	550.7	524.3	505.9	525.3	522.6	521.6	506.1	498.2	505.1
2) Housing mortgages	1,165.8	1,237.9	1,338.1	1,409.1	1,359.6	1,366.2	1,371.6	1,422.4	1,428.3	1,436.6
c) Capital market investments	10.4	10.6	4.2	4.7	4.7	4.7	4.7	4.8	4.8	4.8
d) Other	0.0	0.0	7.4	7.9	7.4	7.4	7.4	7.9	7.9	7.9
4. Foreign assets	2,389.2	2,235.8	2,305.5	2,393.5	2,448.5	2,341.1	2,373.5	2,388.6	2,441.7	2,631.8
a) Gold	230.9	258.3	255.3	303.4	258.1	258.1	280.7	320.5	320.5	352.2
b) Short-term	702.0	600.9	584.0	660.0	561.3	444.9	495.0	563.9	607.6	759.8
c) Long-term	1,456.3	1,376.6	1,466.1	1,430.1	1,629.1	1,638.1	1,597.8	1,504.1	1,513.6	1,519.8
5. Other domestic assets	-7.9	7.4	14.6	34.6	7.3	24.4	19.4	33.2	31.6	19.0
6. Total assets	7,074.6	7,156.0	7,557.8	7,922.9	7,649.2	7,786.1	7,855.5	7,976.5	8,072.1	8,354.4

TABLE 5b: CONSOLIDATED BALANCE SHEET OF THE MONEY-CREATING INSTITUTIONS (continued)

In Afl. million

End of period	2016	2017	2018	2019	2019			2020		
					April	May	June	April	May	June
LIABILITIES										
7. Broad money	4,167.6	4,239.9	4,377.6	4,569.4	4,463.0	4,402.8	4,435.3	4,672.1	4,735.5	4,761.5
a) Money	2,251.5	2,421.6	2,433.3	2,574.8	2,668.9	2,512.3	2,530.8	2,656.3	2,724.4	2,746.2
b) Quasi-money	1,916.1	1,818.3	1,944.3	1,994.6	1,794.0	1,890.5	1,904.5	2,015.8	2,011.2	2,015.2
8. Money-creating institutions	1,240.5	1,213.5	1,394.8	1,367.1	1,406.5	1,396.7	1,404.5	1,392.1	1,445.4	1,596.2
a) Monetary authorities	1,240.4	1,213.4	1,394.8	1,367.1	1,406.4	1,396.4	1,404.5	1,392.1	1,445.4	1,596.2
b) Commercial banks	0.2	0.1	0.0	0.0	0.1	0.3	0.0	0.0	0.0	0.0
9. Public sector deposits	106.6	113.6	125.7	123.9	123.8	199.1	157.1	84.2	94.6	145.6
a) Government	57.8	102.9	125.7	123.9	123.8	199.1	157.1	84.2	94.6	145.6
b) Development funds	48.8	10.7	0.0	0.0	0.0	0.0	0.0	0.0	0.0	0.0
10. Long-term liabilities	0.0	0.0	0.0	0.0	0.0	0.0	0.0	0.0	0.0	0.0
a) Government	0.0	0.0	0.0	0.0	0.0	0.0	0.0	0.0	0.0	0.0
b) Private sector	0.0	0.0	0.0	0.0	0.0	0.0	0.0	0.0	0.0	0.0
11. Subordinated debt	0.0	0.0	0.0	0.0	0.0	0.0	0.0	0.0	0.0	0.0
12. Capital and reserves	827.1	907.0	1,004.4	1,059.8	1,042.9	1,046.1	1,053.4	1,072.7	1,041.0	1,048.9
13. Foreign liabilities	496.8	411.7	387.6	465.4	332.0	369.3	407.8	380.4	362.2	379.7
a) Short-term	426.4	345.9	317.3	373.3	249.2	286.5	326.2	288.2	269.9	288.0
b) Long-term	70.4	65.8	70.3	92.1	82.7	82.8	81.5	92.2	92.3	91.6
14. Revaluation differences*	114.9	139.4	141.7	215.5	156.5	164.0	193.6	244.1	250.1	284.4
15. Other domestic liabilities	121.0	130.9	126.0	121.8	124.6	208.1	203.9	130.9	143.2	138.1
16. Total liabilities	7,074.6	7,156.0	7,557.8	7,922.9	7,649.2	7,786.1	7,855.5	7,976.5	8,072.1	8,354.4

* Of gold and official foreign exchange holdings.

TABLE 6: CENTRALE BANK VAN ARUBA: SUMMARY ACCOUNT

In Afl. million

End of period	Domestic	Foreign	Total	Domestic liabilities							Revaluation of gold and foreign exchange holdings	Foreign liabilities		
	assets	assets	assets = Total liabilities	Capital and reserves	Govern-ment	Develop-ment funds	Reserve money			Total reserve money			Other	
							Notes	Demand deposits	Time deposits					
	(1)	(2)	(3)	(4)	(5)	(6)	(7)	(8)	(9)	(10)	(11)	(12)	(13)	
2016	19.1	1,677.2	1,696.3	96.9	36.1	48.8	270.4	333.7	783.0	1,387.1	8.6	114.9	3.9	
2017	23.8	1,649.9	1,673.7	100.4	46.9	10.7	296.3	421.2	653.3	1,370.8	4.7	139.4	0.7	
2018	25.8	1,780.6	1,806.4	101.1	49.2	0.0	297.9	399.5	805.9	1,503.3	8.5	141.7	2.6	
2019	33.1	1,789.1	1,822.2	120.0	17.3	0.0	258.9	459.8	738.4	1,457.0	8.0	215.5	4.3	
2019	January	27.4	1,800.1	1,827.4	103.4	69.5	0.0	269.0	425.0	787.5	1,481.5	11.2	145.8	16.1
	February	27.2	1,912.2	1,939.3	105.1	101.5	0.0	268.5	461.2	843.9	1,573.6	10.7	147.6	0.8
	March	27.5	1,906.6	1,934.0	107.0	41.6	0.0	272.4	515.9	830.2	1,618.6	10.0	156.1	0.7
	April	27.6	1,935.4	1,963.0	109.2	56.1	0.0	276.6	561.1	791.7	1,629.5	11.3	156.5	0.4
	May	112.4	1,845.1	1,957.5	104.3	57.2	0.0	328.1	516.6	770.4	1,615.1	9.7	164.0	7.1
	June	113.0	1,860.0	1,972.9	106.6	64.0	0.0	257.1	484.8	854.9	1,596.8	11.6	193.6	0.3
	July	112.8	1,834.8	1,947.6	109.2	79.1	0.0	241.1	474.8	845.4	1,561.3	7.8	189.2	1.0
	August	88.4	1,857.7	1,946.1	111.5	58.6	0.0	227.5	582.7	759.1	1,569.2	8.3	197.9	0.5
	September	84.9	1,823.9	1,908.8	113.6	19.8	0.0	227.0	427.9	900.8	1,555.8	8.4	209.5	1.7
	October	73.5	1,790.8	1,864.3	115.7	24.5	0.0	227.0	559.6	718.3	1,504.9	8.1	210.9	0.1
	November	55.3	1,703.3	1,758.6	118.6	20.9	0.0	238.1	418.5	745.1	1,401.7	8.9	208.3	0.3
	December	33.1	1,789.1	1,822.2	120.0	17.3	0.0	258.9	459.8	738.4	1,457.0	8.0	215.5	4.3
2020	January	33.3	1,852.9	1,886.2	122.7	52.1	0.0	236.3	506.5	739.2	1,481.9	8.9	220.4	0.1
	February	33.4	1,863.6	1,897.0	125.0	21.8	0.0	238.4	530.8	747.0	1,516.2	8.1	225.3	0.6
	March	38.1	1,871.5	1,909.6	127.3	39.2	0.0	250.8	672.7	578.5	1,502.0	8.7	232.2	0.2
	April	34.7	1,876.3	1,910.9	129.5	53.5	0.0	258.8	936.0	279.4	1,474.1	9.6	244.1	0.1
	May	34.1	1,950.6	1,984.6	112.2	57.6	0.0	271.9	980.9	284.9	1,537.7	27.0	250.1	0.1
	June	34.1	2,186.1	2,220.2	115.9	80.2	0.0	277.5	1,135.5	282.2	1,695.1	28.0	284.4	16.5

TABLE 7: COMMERCIAL BANKS' CONSOLIDATED SUMMARY ACCOUNT

In Afl. million

End of period	May 2020			June 2020		
	Overall	Resident	Non-Resident	Overall	Resident	Non-Resident
Assets						
1) Cash	109.8	48.0	61.8	109.3	47.0	62.3
2) Central Bank	1,263.8	1,263.8	0.0	1,419.4	1,419.4	0.0
a) Current account	978.9	978.9	0.0	1,137.3	1,137.3	0.0
b) Time deposits	284.9	284.9	0.0	282.2	282.2	0.0
3) Due from banks	323.3	0.0	323.3	274.6	0.1	274.5
a) Current account	302.3	0.0	302.3	253.4	0.1	253.3
b) Time deposits	21.0	0.0	21.0	21.1	0.0	21.1
1) One year and below	21.0	0.0	21.0	21.1	0.0	21.1
2) Over one year	0.0	0.0	0.0	0.0	0.0	0.0
4) Loans	3,549.7	3,456.7	93.1	3,567.6	3,473.4	94.2
a) Enterprises	1,004.0	1,001.6	2.5	993.2	990.8	2.4
b) Individuals	499.5	497.6	1.9	506.2	504.4	1.9
c) Mortgage	2,046.2	1,957.5	88.7	2,068.2	1,978.2	89.9
d) Government	0.0	0.0	0.0	0.0	0.0	0.0
5) Securities	624.0	624.0	0.0	557.0	557.0	0.0
a) Short-term securities	132.4	132.4	0.0	132.4	132.4	0.0
b) Government bonds	486.8	486.8	0.0	419.8	419.8	0.0
c) Other	4.8	4.8	0.0	4.8	4.8	0.0
6) Sundry	132.1	119.1	12.9	121.7	107.0	14.7
7) Fixed assets	148.4	148.4	0.0	148.4	148.4	0.0
8) Total	6,151.0	5,660.0	491.1	6,198.0	5,752.3	445.7
Liabilities						
9) Current account	2,623.2	2,496.7	126.6	2,664.6	2,540.1	124.5
a) Government	37.1	37.1	0.0	65.4	65.4	0.0
b) Private sector	2,586.2	2,459.6	126.6	2,599.2	2,474.7	124.5
10) Savings deposits	1,146.4	1,104.8	41.7	1,135.8	1,093.7	42.1
11) Time deposits	1,013.8	905.8	108.0	1,027.9	920.9	107.0
a) Development funds	0.0	0.0	0.0	0.0	0.0	0.0
b) Private sector	1,013.8	905.8	108.0	1,027.9	920.9	107.0
12) Due to banks	59.7	0.0	59.7	65.1	0.0	65.1
13) Other liabilities	379.0	352.9	26.1	371.7	347.2	24.5
14) Capital and reserves	928.8	928.8	0.0	933.0	933.0	0.0
15) Total	6,151.0	5,788.9	362.1	6,198.0	5,834.9	363.2
Supervisory ratios*						
Capital/risk-weighted assets ratio	31.7			31.9		
Loan/deposit ratio	68.4			68.1		
Liquidity ratio	32.1			32.5		

* Supervisory ratios cannot be derived from the consolidated balance sheet.

TABLE 8: GOVERNMENT REVENUE
In Afl. million

	2016	2017	2018	2019	2019 April	May	June	2020 April	May	June
TOTAL REVENUE	1,214.4	1,220.0	1,299.4	1,402.4	95.9	198.4	115.7	61.4	68.4	72.6
TAX REVENUE	1,074.9	1,087.5	1,141.5	1,236.2	84.2	154.8	107.2	54.6	63.4	64.4
Taxes on income and profit	500.7	486.1	498.8	486.7	27.1	90.8	41.1	21.4	38.9	30.0
Of which:										
-Wage tax	261.3	276.0	288.4	267.1	19.7	23.2	21.0	20.0	15.4	16.1
-Income tax	1.0	11.4	15.2	60.6	4.6	3.5	0.5	0.1	1.1	1.6
-Profit tax	238.4	198.7	195.2	159.0	2.9	64.1	19.6	1.2	22.4	12.3
-Solidarity tax	0.0	0.0	0.0	0.0	0.0	0.0	0.0	0.0	0.0	0.0
Taxes on commodities	295.5	306.4	318.0	338.6	26.7	26.9	25.5	15.7	10.0	14.5
Of which:										
-Excises on gasoline	72.8	68.0	65.2	73.8	6.2	5.8	6.2	5.3	2.7	4.0
-Excises on tobacco	9.0	14.7	14.2	15.2	1.9	0.4	0.0	0.1	0.0	0.7
-Excises on beer	27.2	29.2	28.2	31.4	2.1	3.0	2.1	1.5	1.2	0.9
-Excises on liquor	22.8	24.5	24.3	31.6	2.4	2.6	2.1	1.0	0.3	0.5
-Import duties	163.6	169.9	186.1	186.7	14.1	15.2	15.1	7.8	5.9	8.3
Taxes on property	87.0	94.0	84.0	91.9	4.5	10.8	12.1	2.1	3.0	8.3
Of which:										
-Motor vehicle fees	23.1	26.7	26.2	27.3	0.5	0.5	2.0	0.2	0.4	1.4
-Succession tax	1.1	1.1	0.6	0.6	0.0	0.0	0.0	0.0	0.0	0.0
-Land tax	42.9	48.9	38.9	39.1	1.2	8.8	9.3	0.4	1.9	5.4
-Transfer tax	19.8	17.2	18.3	24.9	2.9	1.5	0.8	1.5	0.8	1.5
Taxes on services	47.6	47.8	49.6	52.1	5.0	4.8	4.3	1.8	1.1	0.3
Of which:										
-Gambling licenses	24.0	24.0	25.0	25.0	2.3	1.9	1.9	0.7	0.0	0.0
-Hotel room tax	6.6	5.6	6.2	7.5	0.7	0.6	0.6	0.3	0.0	0.0
-Stamp duties	1.7	1.5	1.8	2.4	0.3	0.1	0.4	0.1	0.1	0.2
-Other	15.3	16.6	16.7	17.3	1.7	2.2	1.4	0.7	1.0	0.1
Turnover tax (B.B.O.)/(B.A.V.P.)	94.1	104.2	143.2	215.6	18.5	17.5	18.5	10.7	7.4	9.5
Foreign exchange tax	50.0	49.1	47.9	51.3	2.4	4.1	5.7	3.0	3.0	1.9
NONTAX REVENUE	139.5	132.5	158.0	166.2	11.7	43.6	8.5	6.8	4.9	8.1
Of which:										
- Grants	-8.5	6.9	0.0	0.0	0.0	0.0	0.0	0.0	0.0	0.0
- Other nontax revenue *	148.0	125.6	158.0	166.2	11.7	43.6	8.5	6.8	4.9	8.1

* Including dividend distributions.

** Excluding nontax revenue from the Department of Finance.

Source: Department of Finance; Centrale Bank van Aruba

TABLE 9: GOVERNMENT'S POSITION WITH THE MONETARY SYSTEM

End of period	Domestic deposits						Gross liquidity position	Liabilities to			Net liability to the monetary system	Change in net liability during period
	Central Bank				Commercial banks			Monetary authorities	Commercial banks	Total		
	Free	Earmarked	Development funds	Total	Demand	Development funds						
	(1)	(2)	(3)	(4= 1+2+3)	(5)	(6)	(7= 4+5+6)	(8)	(9)	(10= 8+9)	(11= 10-7)	(12)
2016	16.7	19.3	48.8	84.8	21.8	0.0	106.6	100.4	293.2	393.6	287.0	91.4
2017	21.2	25.8	10.7	57.6	56.0	0.0	113.6	109.7	403.9	513.6	400.0	113.0
2018	39.0	10.2	0.0	49.2	76.5	0.0	125.7	153.2	406.6	559.8	434.1	34.1
2019	5.6	11.7	0.0	17.3	106.5	0.0	123.9	139.7	486.8	626.5	502.6	68.6
2019 January	57.0	12.4	0.0	69.5	99.1	0.0	168.5	153.4	406.6	560.0	391.5	-42.6
February	89.5	12.0	0.0	101.5	91.3	0.0	192.8	63.6	411.7	475.3	282.5	-109.0
March	28.8	12.8	0.0	41.6	90.3	0.0	131.9	38.7	411.9	450.6	318.7	36.3
April	38.6	17.5	0.0	56.1	67.7	0.0	123.8	38.8	411.7	450.5	326.7	8.0
May	41.0	16.2	0.0	57.2	141.9	0.0	199.1	38.9	496.7	535.6	336.5	9.8
June	46.0	18.0	0.0	64.0	93.1	0.0	157.1	39.0	496.7	535.7	378.6	42.1
July	63.4	15.7	0.0	79.1	65.1	0.0	144.2	39.1	496.7	535.8	391.6	13.0
August	41.4	17.2	0.0	58.6	53.6	0.0	112.2	39.3	496.7	536.0	423.7	32.1
September	7.4	12.4	0.0	19.8	45.0	0.0	64.8	39.3	496.7	536.0	471.2	47.5
October	11.3	13.2	0.0	24.5	51.1	0.0	75.6	59.4	486.8	546.2	470.6	-0.6
November	8.1	12.8	0.0	20.9	65.1	0.0	86.0	139.6	486.8	626.4	540.3	69.7
December	5.6	11.7	0.0	17.3	106.5	0.0	123.9	139.7	486.8	626.5	502.6	-37.7
2020 January	36.9	15.2	0.0	52.1	74.3	0.0	126.4	139.9	486.8	626.7	500.3	-2.4
February	7.1	14.7	0.0	21.8	60.3	0.0	82.2	140.0	486.8	626.7	544.6	44.3
March	26.3	12.9	0.0	39.2	34.9	0.0	74.1	148.1	486.8	634.8	560.8	16.2
April	21.3	32.2	0.0	53.5	30.7	0.0	84.2	173.1	486.8	659.8	575.6	14.9
May	3.5	54.0	0.0	57.6	37.1	0.0	94.6	173.1	486.8	659.9	565.3	-10.4
June	22.4	57.8	0.0	80.2	65.4	0.0	145.6	173.2	419.8	593.1	447.4	-117.8

TABLE 10: TOURISM

Period	Total visitor nights	Total visitors	Visitors by origin							Diversification Index 1)	Average nights stay	Average hotel occupancy rate	Cruise tourism	
			North America	Of which U.S.A.	Latin America	Of which Venezuela	Europe	Of which Netherlands	Other				Number of passengers	Ship calls
	(1)	(2)	(3)	(4)	(5)	(6)	(7)	(8)	(9)	(10)	(11)	(12)	(13)	(14)
2016	7,975,560	1,101,954	670,891	628,832	302,009	209,128	86,743	36,342	42,311	0.37	7.2	n.a.	656,043	307
2017	7,966,583	1,070,548	743,017	695,851	202,776	96,653	90,871	37,246	33,884	0.44	7.4	n.a.	792,384	352
2018	8,069,965	1,082,003	792,995	742,107	164,070	50,582	89,745	40,231	35,193	0.48	7.5	n.a.	815,161	334
2019	8,228,861	1,117,660	889,559	837,363	106,519	14,944	93,169	42,898	28,413	0.57	7.4	n.a.	832,001	324
2018 January	757,183	91,471	66,734	59,481	14,917	4,536	7,284	3,655	2,536	0.44	8.3	n.a.	108,298	53
February	673,369	85,017	67,434	61,123	9,275	1,322	6,249	3,104	2,059	0.53	7.9	n.a.	99,303	41
March	711,513	98,467	80,187	73,690	9,226	1,419	5,984	2,881	3,070	0.57	7.2	n.a.	101,237	40
April	622,483	88,115	69,542	65,331	10,121	2,078	5,866	3,514	2,586	0.56	7.1	n.a.	55,618	26
May	597,338	85,430	63,007	60,549	11,895	3,654	6,965	3,364	3,563	0.51	7.0	n.a.	40,224	13
June	649,659	91,877	66,767	64,736	15,302	4,515	6,381	2,755	3,427	0.50	7.1	n.a.	32,565	9
July	758,095	101,386	72,624	69,912	16,697	4,643	8,182	3,577	3,883	0.48	7.5	n.a.	46,370	16
August	671,392	91,534	61,661	59,173	16,849	7,179	10,205	3,326	2,819	0.43	7.3	n.a.	43,632	17
September	555,099	76,017	49,723	47,285	15,311	5,519	8,327	2,981	2,656	0.40	7.3	n.a.	41,014	13
October	591,892	80,820	56,056	53,163	13,080	4,139	8,245	3,726	3,439	0.44	7.3	n.a.	55,056	22
November	641,827	88,811	64,377	60,100	13,719	4,659	8,152	3,781	2,563	0.57	7.2	n.a.	94,749	42
December	840,115	103,058	74,883	67,564	17,678	6,919	7,905	3,567	2,592	0.72	8.2	n.a.	97,095	42
2019 January	760,150	94,244	71,877	65,434	12,603	3,772	7,877	4,152	1,887	0.52	8.1	n.a.	128,425	52
February	734,223	93,209	75,440	68,922	8,297	1,698	7,369	3,769	2,103	0.58	7.9	n.a.	86,084	34
March	755,070	106,730	90,305	83,586	7,535	742	6,550	3,557	2,340	0.84	7.1	n.a.	78,413	32
April	653,775	93,953	76,678	72,681	8,493	940	6,620	3,669	2,162	0.64	7.0	n.a.	62,513	25
May	610,675	88,543	69,826	67,227	8,740	651	7,301	3,633	2,676	0.55	6.9	n.a.	46,099	15
June	691,892	98,970	79,736	77,493	9,815	725	7,279	2,951	2,140	0.72	7.0	n.a.	33,578	9
July	767,980	103,464	82,417	79,725	10,121	829	8,336	3,671	2,590	0.77	7.4	n.a.	46,952	15
August	678,286	96,100	73,869	70,990	9,435	1,524	10,570	3,302	2,226	0.61	7.1	n.a.	38,953	15
September	530,368	73,628	55,012	52,401	8,607	1,011	8,207	3,031	1,802	0.33	7.2	n.a.	34,508	11
October	565,076	78,105	60,522	57,507	7,120	699	7,575	3,566	2,888	0.40	7.2	n.a.	53,258	24
November	659,556	90,001	71,732	66,767	7,307	843	8,008	4,037	2,954	0.54	7.3	n.a.	96,766	42
December	821,810	100,713	82,145	74,630	8,446	1,510	7,477	3,560	2,645	0.68	8.2	n.a.	126,452	50
2020 January	697,854	90,623	74,766	67,817	7,343	574	6,899	3,499	1,615	0.56	7.7	n.a.	112,614	44
February	723,751	95,287	81,071	73,419	5,433	435	6,996	3,818	1,787	0.65	7.6	n.a.	96,751	36
March	302,136	42,842	37,311	33,941	1,839	135	2,710	1,695	982	0.14	7.1	n.a.	46,019	18
April	0	0	0	0	0	0	0	0	0	0.00	0.0	n.a.	0	0
May	0	0	0	0	0	0	0	0	0	0.00	0.0	n.a.	0	0
June	0	0	0	0	0	0	0	0	0	0.00	0.0	n.a.	0	0

1) The Diversification Index measures the concentration within the tourist market, and thus demonstrates the degree of diversification by tourist origin countries. The higher the index, the higher the level of concentration, meaning less diversification. For further reference on the methodology (which is an application of a Herfindahl-Hirschman index) see the Quarterly Bulletin (2011-I) of the CBA.

Source: Aruba Tourism Authority/Central Bureau of Statistics/Aruba Hotel and Tourism Association/Cruise Tourism Authority.

TABLE 11: GROWTH IN STAY-OVER TOURISM

		Total visitor nights	Total visitors	North America	Of which U.S.A.	Latin America	Of which Venezuela	Europe	Of which Nether- lands	Other
Period		(1)	(2)	(3)	(4)	(5)	(6)	(7)	(8)	(9)
<i>Monthly percentage changes 1)</i>										
2018	January	3.1	2.5	8.3	7.4	-18.1	-48.9	6.2	13.3	-1.5
	February	1.6	1.0	7.5	7.5	-29.4	-75.6	5.0	6.3	-13.3
	March	10.8	9.2	13.1	13.4	-16.1	-65.5	7.3	-3.5	16.4
	April	-9.0	-9.1	-0.7	-1.2	-39.8	-73.4	-18.4	-0.1	-9.3
	May	4.4	5.5	8.7	9.3	-7.4	-23.3	-5.5	15.8	28.4
	June	6.9	7.7	12.0	11.8	-4.3	-32.0	-6.8	18.2	21.5
	July	-1.9	-0.9	4.4	4.6	-20.8	-53.1	-5.9	4.1	31.5
	August	1.8	0.8	6.8	7.0	-18.8	-39.9	5.0	3.6	8.8
	September	-2.0	-2.1	8.2	8.4	-24.4	-52.2	-6.1	0.6	2.9
	October	-1.0	-0.8	3.7	3.9	-15.5	-42.0	-4.6	19.2	4.0
	November	3.2	3.2	5.8	5.1	-5.9	-30.5	8.4	11.1	-18.5
	December	-0.5	-2.4	4.0	3.9	-22.0	-41.4	3.7	10.6	-20.7
2019	January	0.4	3.0	7.7	10.0	-15.5	-16.8	8.1	13.6	-25.6
	February	9.0	9.6	11.9	12.8	-10.5	28.4	17.9	21.4	2.1
	March	6.1	8.4	12.6	13.4	-18.3	-47.7	9.5	23.5	-23.8
	April	5.0	6.6	10.3	11.3	-16.1	-54.8	12.9	4.4	-16.4
	May	2.2	3.6	10.8	11.0	-26.5	-82.2	4.8	8.0	-24.9
	June	6.5	7.7	19.4	19.7	-35.9	-83.9	14.1	7.1	-37.6
	July	1.3	2.0	13.5	14.0	-39.4	-82.1	1.9	2.6	-33.3
	August	1.0	5.0	19.8	20.0	-44.0	-78.8	3.6	-0.7	-21.0
	September	-4.5	-3.1	10.6	10.8	-43.8	-81.7	-1.4	1.7	-32.2
	October	-4.5	-3.4	8.0	8.2	-45.6	-83.1	-8.1	-4.3	-16.0
	November	2.8	1.3	11.4	11.1	-46.7	-81.9	-1.8	6.8	15.3
	December	-2.2	-2.3	9.7	10.5	-52.2	-78.2	-5.4	-0.2	2.0
2020	January	-8.2	-3.8	4.0	3.6	-41.7	-84.8	-12.4	-15.7	-14.4
	February	-1.4	2.2	7.5	6.5	-34.5	-74.4	-5.1	1.3	-15.0
	March	-60.0	-59.9	-58.7	-59.4	-75.6	-81.8	-58.6	-52.3	-58.0
	April	-100.0	-100.0	-100.0	-100.0	-100.0	-100.0	-100.0	-100.0	-100.0
	May	-100.0	-100.0	-100.0	-100.0	-100.0	-100.0	-100.0	-100.0	-100.0
	June	-100.0	-100.0	-100.0	-100.0	-100.0	-100.0	-100.0	-100.0	-100.0
<i>Cumulative percentage changes 2)</i>										
2018	January	3.1	2.5	8.3	7.4	-18.1	-48.9	6.2	13.3	-1.5
	February	2.4	1.8	7.9	7.4	-22.8	-59.0	5.7	10.0	-7.2
	March	5.0	4.3	9.8	9.6	-21.1	-60.5	6.1	5.6	1.0
	April	1.5	0.7	7.0	6.7	-26.4	-64.3	-0.8	4.0	-1.8
	May	2.0	1.6	7.3	7.2	-23.0	-58.0	-1.8	6.2	4.5
	June	2.8	2.6	8.0	7.9	-19.6	-53.4	-2.7	7.8	7.5
	July	2.0	2.0	7.5	7.4	-19.8	-53.4	-3.3	7.2	11.2
	August	2.0	1.9	7.4	7.4	-19.7	-50.6	-1.9	6.7	11.0
	September	1.6	1.5	7.5	7.4	-20.3	-50.9	-2.4	6.1	10.1
	October	1.4	1.3	7.1	7.1	-19.9	-50.1	-2.7	7.4	9.4
	November	1.5	1.4	7.0	6.9	-18.7	-48.5	-1.7	7.8	6.5
	December	1.3	1.1	6.7	6.6	-19.1	-47.7	-1.2	8.0	3.9
2019	January	0.4	3.0	7.7	10.0	-15.5	-16.8	8.1	13.6	-25.6
	February	4.5	6.2	9.8	11.4	-13.6	-6.6	12.7	17.2	-13.2
	March	5.0	7.0	10.9	12.2	-14.9	-14.6	11.7	19.1	-17.4
	April	5.0	6.9	10.7	11.9	-15.2	-23.5	11.9	15.2	-17.2
	May	4.5	6.3	10.7	11.8	-17.6	-40.0	10.4	13.7	-19.2
	June	4.8	6.5	12.1	13.1	-21.6	-51.3	11.0	12.8	-22.8
	July	4.3	5.8	12.3	13.2	-25.0	-57.8	9.4	11.2	-24.7
	August	3.9	5.7	13.2	14.0	-28.0	-62.9	8.4	9.7	-24.3
	September	3.1	4.9	13.0	13.8	-30.1	-65.9	7.1	8.8	-25.1
	October	2.4	4.1	12.5	13.3	-31.6	-67.7	5.4	7.4	-24.0
	November	2.5	3.9	12.4	13.1	-33.0	-69.2	4.7	7.3	-21.0
	December	2.0	3.3	12.2	12.8	-35.1	-70.5	3.8	6.6	-19.3
2020	January	-8.2	-3.8	4.0	3.6	-41.7	-84.8	-12.4	-15.7	-14.4
	February	-4.9	-0.8	5.8	5.1	-38.9	-81.6	-8.9	-7.6	-14.7
	March	-23.4	-22.2	-18.7	-19.6	-48.6	-81.6	-23.8	-21.5	-30.7
	April	-40.6	-41.1	-38.5	-39.7	-60.4	-84.0	-41.6	-40.5	-48.4
	May	-50.9	-52.0	-49.7	-51.0	-68.0	-85.3	-53.5	-52.0	-60.7
	June	-59.0	-60.3	-58.4	-59.8	-73.7	-86.6	-61.4	-58.5	-67.1

1) As compared to a year earlier.

2) From the beginning of the year to the end of the indicated period as compared to the corresponding period of a year earlier.

TABLE 12: CONSUMER PRICE INDEX

(June 2019 = 100)

End of period	All groups index	Percentage Change			
		Over previous month	Over 3 months earlier	Over a year earlier	Last 12 months over previous 12 months
2017	92.5	0.7	1.2	-0.5	-1.0
2018	96.7	0.7	0.9	4.5	3.6
2019	101.7	1.1	1.7	5.2	4.3
2018 January	92.9	0.4	0.9	1.1	-0.9
February	93.9	1.1	2.1	2.1	-0.6
March	94.7	0.9	2.3	3.2	-0.3
April	94.5	-0.2	1.8	2.8	0.0
May	94.9	0.4	1.1	3.0	0.3
June	95.4	0.5	0.7	3.8	0.7
July	96.5	1.2	2.1	5.3	1.3
August	96.0	-0.6	1.1	4.7	1.8
September	95.8	-0.2	0.4	4.7	2.3
October	95.7	-0.1	-0.9	3.9	2.7
November	96.0	0.3	0.0	4.4	3.2
December	96.7	0.7	0.9	4.5	3.6
2019 January	96.3	-0.4	0.6	3.6	3.8
February	96.7	0.4	0.7	3.0	3.9
March	98.0	1.4	1.4	3.5	3.9
April	98.8	0.8	2.7	4.5	4.1
May	99.2	0.4	2.6	4.5	4.2
June	100.0	0.8	2.0	4.8	4.3
July	100.1	0.1	1.2	3.7	4.2
August	99.8	-0.3	0.6	4.0	4.1
September	100.0	0.2	0.0	4.4	4.1
October	100.5	0.5	0.4	5.0	4.2
November	100.5	0.0	0.7	4.8	4.2
December	101.7	1.1	1.7	5.2	4.3
2020 January	101.6	-0.1	1.1	5.5	4.4
February	101.7	0.2	1.2	5.2	4.6
March	101.4	-0.3	-0.2	3.5	4.6
April	100.7	-0.7	-0.9	1.9	4.4
May	100.0	-0.7	-1.7	0.8	4.1
June	99.7	-0.2	-1.7	-0.3	3.6

* As of January 2017, the expenditure weights will be based on the Household Expenditure Survey held by the CBS during the months of May to July of 2016



CENTRALE BANK VAN ARUBA

J.E. Irausquin Blvd 8, Oranjestad, Aruba
Phone: +297 525 2100
www.cbaruba.org

